

# AI Ethics Checklist for Microsoft-Based Environments

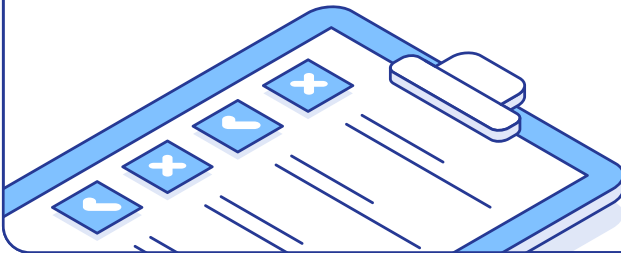
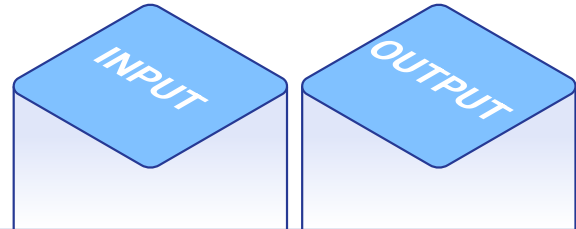


# Checklist Items



## Input/Output Disparity Testing

Do similar inputs produce biased outputs when demographics change?



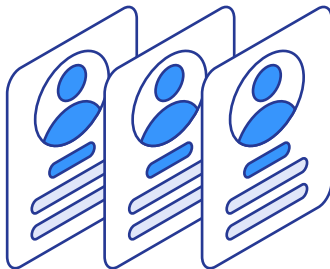
## Protected Class Regression Tests

Do race, gender, or disability changes unfairly affect results?



## Intentional Prompt Attacks

Can users trick the AI into producing dangerous, unethical, or offensive outputs?



## Decision Consistency Audits

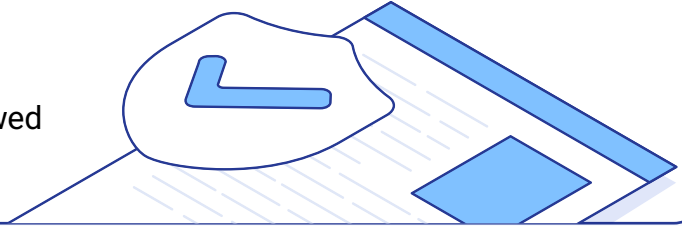
Are similar users receiving different decisions without reason?

# Checklist Items



## Legal Team Review of High-Risk Scenarios

Have legal and compliance reviewed logic for fairness and legal risk?



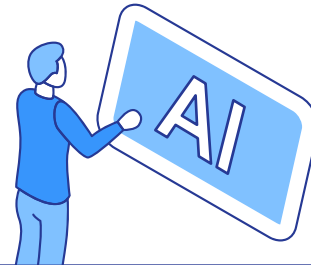
## Logging of AI Inputs and Outputs

Are all requests and responses logged for audit and defense?



## Explainability Review

Can the system explain its decisions in a way humans understand?



## Human Override Paths

Can humans override AI decisions where stakes are high?